



Electrolux
PROFESSIONAL

**Standard Preparation
1000 mm Solid Wall Shelf with
Brackets**

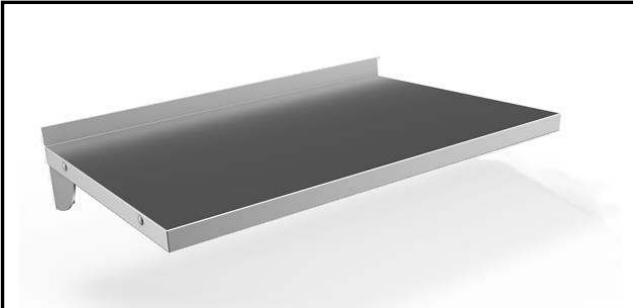
ITEM # _____

MODEL # _____

NAME # _____

SIS # _____

AIA # _____



132823 (WSS104N)

Solid Wall Shelf with
brackets, 1000mm

Short Form Specification

Item No. _____

Made from 304 AISI stainless steel, 1mm in thickness.
Upturned edges. Integral radiused rear upstand, h=30mm.
Wall brackets allow the shelf to be positioned at different heights.

Main Features

- Smooth surfaces, rounded corners, absence of edges and rear upstand facilitate cleaning operations.
- Sturdiness, stability and reliability of table accurately tested.

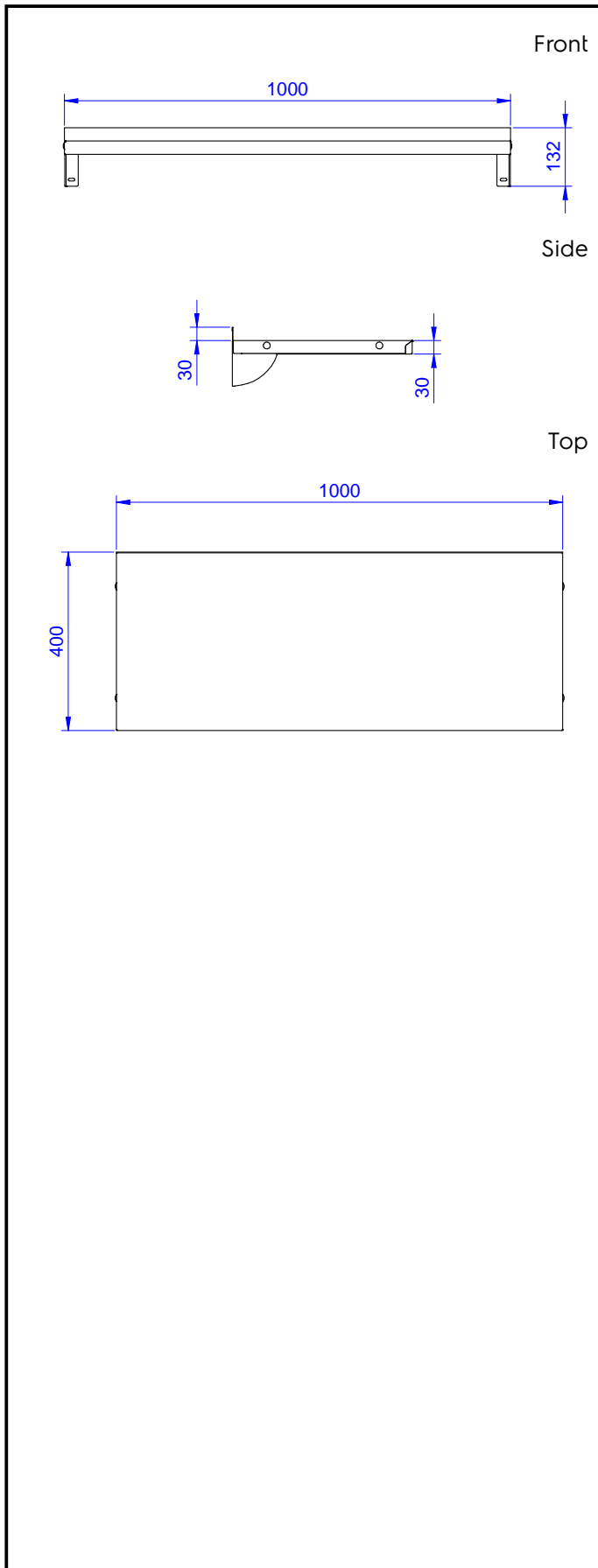
Construction

- Made entirely in 304 AISI stainless steel, 10/10 in thickness; with a Scotch Brite finish.
- Upturned edges, 50 mm high, to guarantee operator safety.
- Incorporates a rear upstand to avoid spillage between wall and shelf.
- 100 mm upstand with 10 mm radiused corner and 13 mm deep, designed to be used against a wall.

APPROVAL: _____



Experience the Excellence
www.electroluxprofessional.com



Key Information:

External dimensions, Width:	1000 mm
132823 (WSS104N)	
External dimensions, Depth:	400 mm
External dimensions, Height:	30 mm
Upstand Dimensions, Height:	23 mm
Upstand Dimensions, Depth:	2 mm
Upstand Dimensions, Radius:	R=10
Net weight:	2 kg